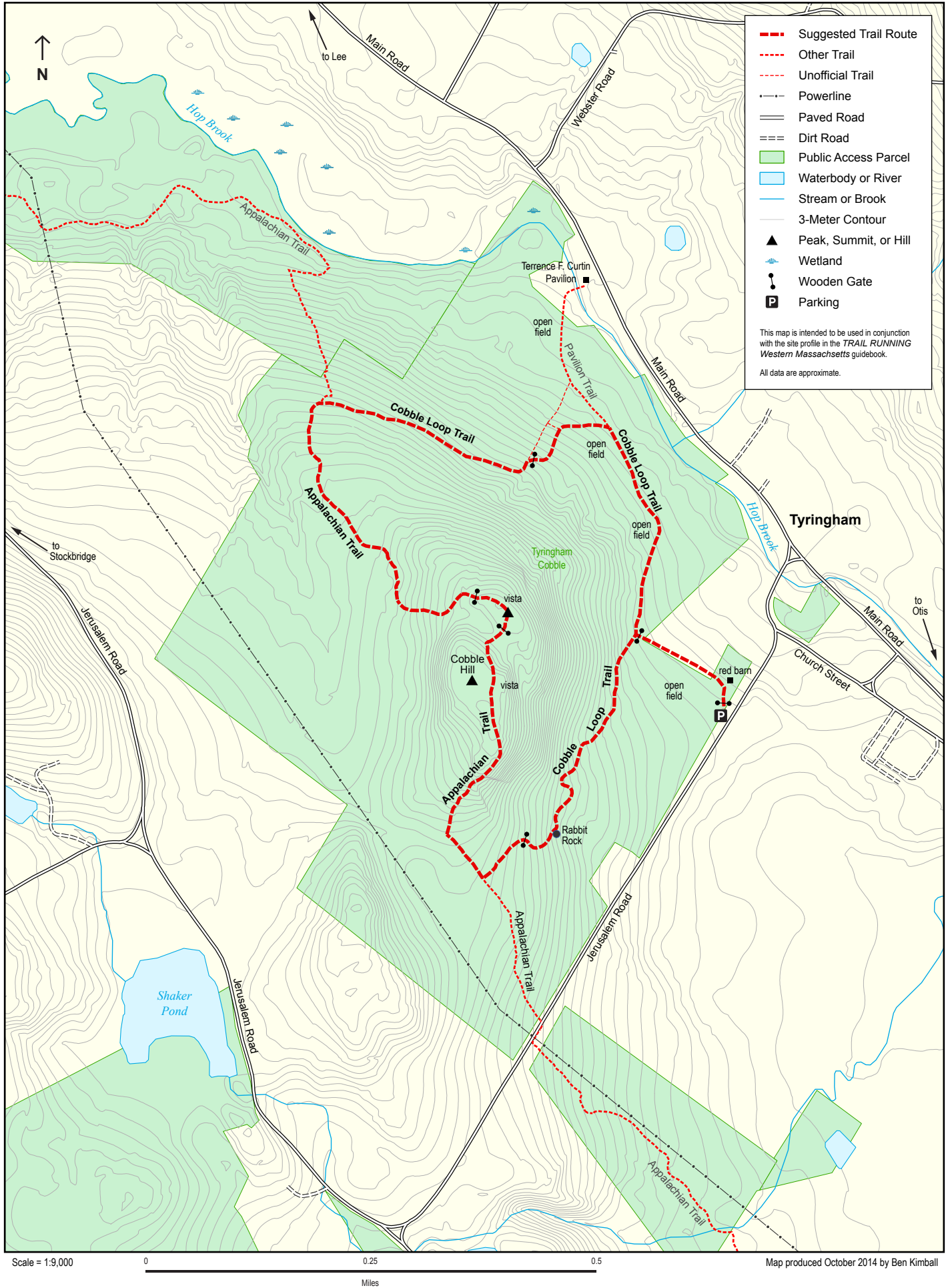


# TRAIL RUNNING Western Massachusetts, Site 16: Tyringham Cobble

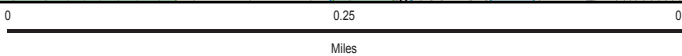


- - - Suggested Trail Route
- · - · - Other Trail
- - - - - Unofficial Trail
- · - · - Powerline
- = = = Paved Road
- - - - - Dirt Road
- Public Access Parcel
- Waterbody or River
- Stream or Brook
- 3-Meter Contour
- ▲ Peak, Summit, or Hill
- ~ Wetland
- Wooden Gate
- P Parking

This map is intended to be used in conjunction with the site profile in the *TRAIL RUNNING Western Massachusetts* guidebook.

All data are approximate.

Scale = 1:9,000



Map produced October 2014 by Ben Kimball