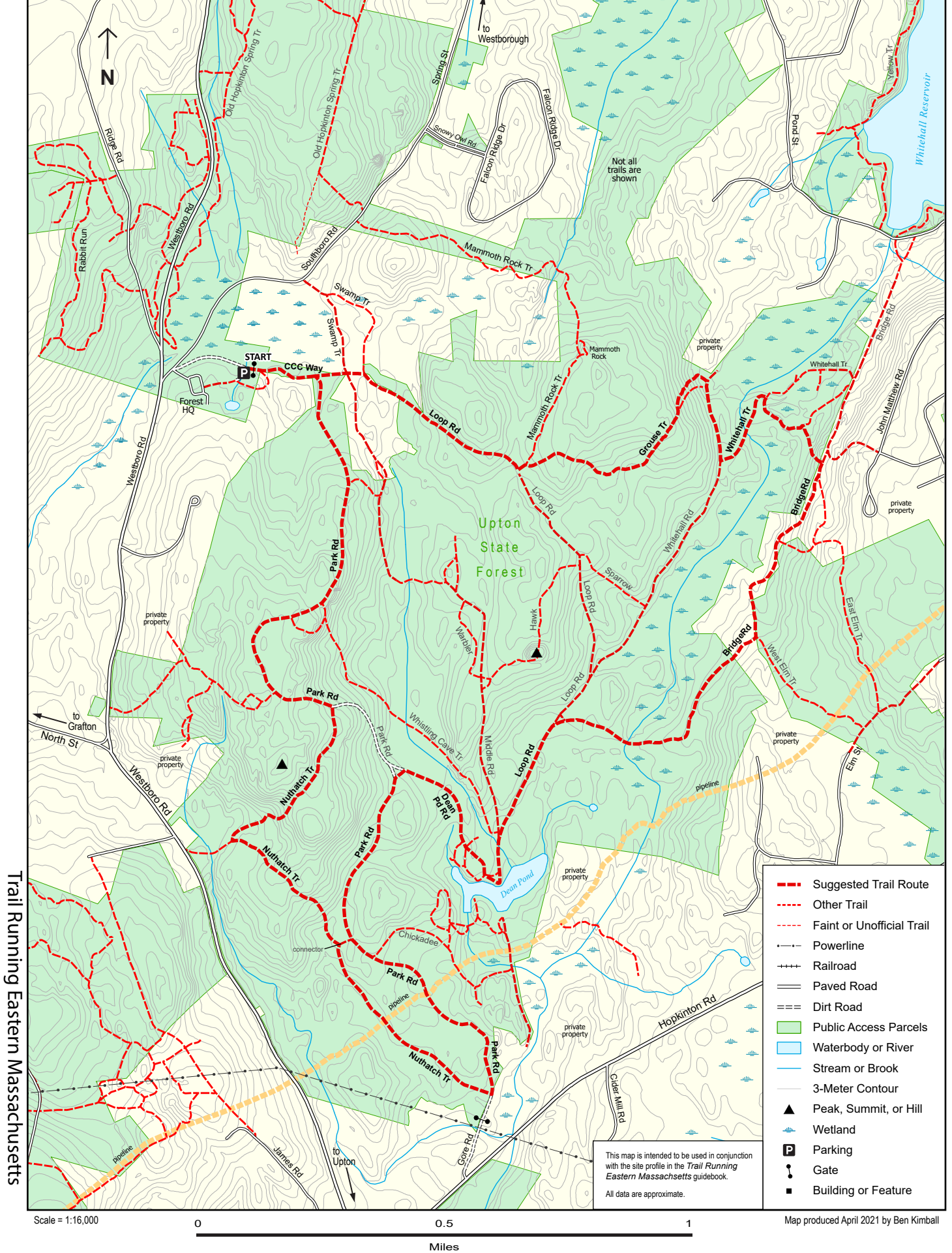


TRAIL RUNNING Eastern Massachusetts, Site 16: Upton State Forest



Trail Running Eastern Massachusetts

- Suggested Trail Route
- Other Trail
- Faint or Unofficial Trail
- Powerline
- Railroad
- Paved Road
- Dirt Road
- Public Access Parcels
- Waterbody or River
- Stream or Brook
- 3-Meter Contour
- ▲ Peak, Summit, or Hill
- Wetland
- P Parking
- Gate
- Building or Feature

Scale = 1:16,000

0 0.5 1

Miles

Map produced April 2021 by Ben Kimball