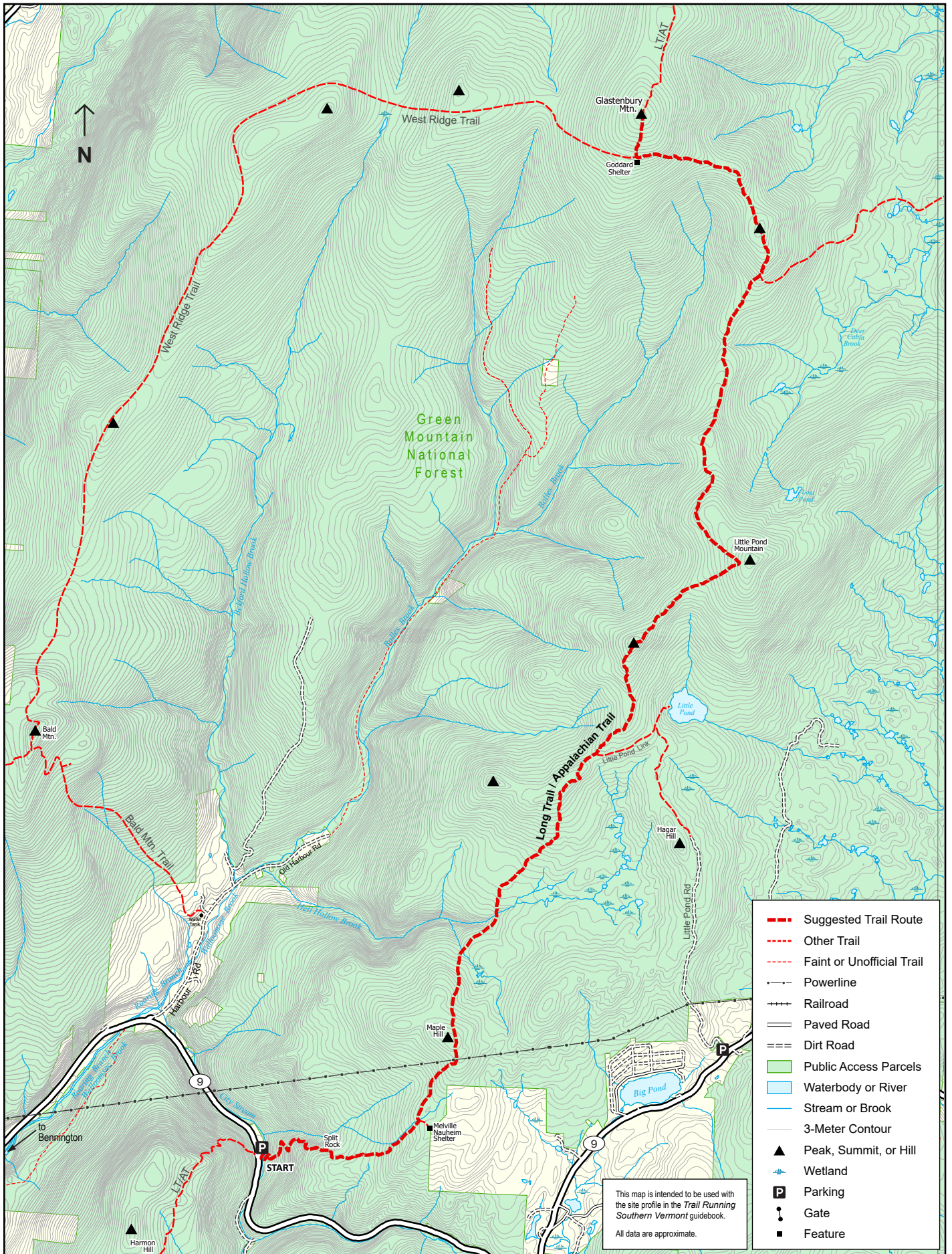


TRAIL RUNNING Southern Vermont, Site 13: Glastenbury Peak

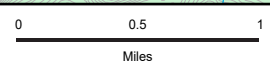
Trail Running Southern Vermont



- Suggested Trail Route
- Other Trail
- Faint or Unofficial Trail
- Powerline
- + Railroad
- = Paved Road
- Dirt Road
- Public Access Parcels
- Waterbody or River
- Stream or Brook
- 3-Meter Contour
- ▲ Peak, Summit, or Hill
- Wetland
- P Parking
- Gate
- Feature

This map is intended to be used with the site profile in the *Trail Running Southern Vermont* guidebook. All data are approximate.

Scale = 1:50,000



Map produced April 2023 by Ben Kimball