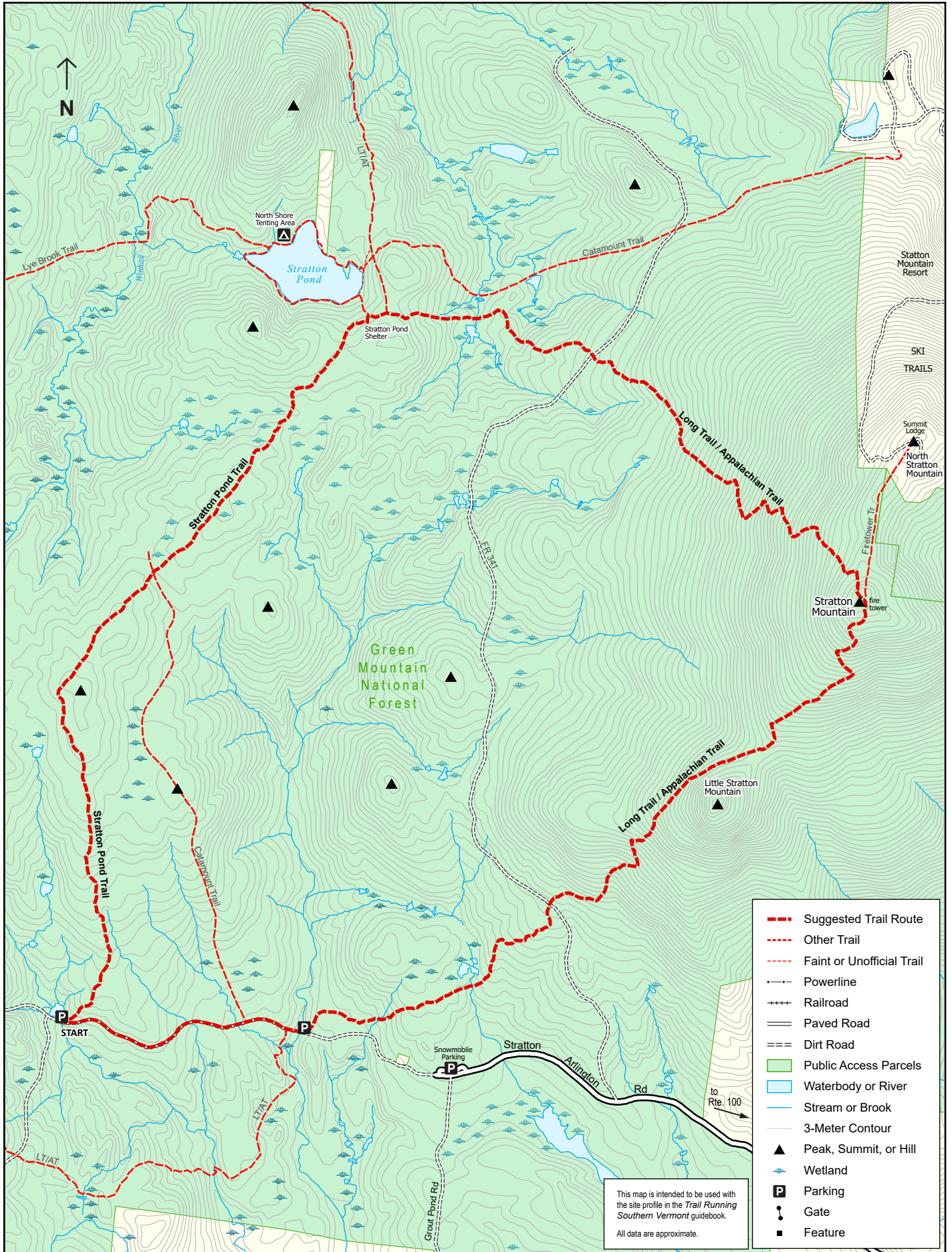
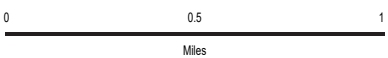


TRAIL RUNNING Southern Vermont, Site 23: Stratton Mountain

Trail Running Southern Vermont



Scale = 1:32,000



Miles

This map is intended to be used with the site profile in the *Trail Running Southern Vermont* guidebook.
All data are approximate.

- Suggested Trail Route
- Other Trail
- Faint or Unofficial Trail
- - - Powerline
- ++++ Railroad
- == Paved Road
- == Dirt Road
- Public Access Parcels
- Waterbody or River
- Stream or Brook
- 3-Meter Contour
- ▲ Peak, Summit, or Hill
- Wetland
- P Parking
- Gate
- Feature

Map produced April 2023 by Ben Kimball